

SWEDEN BUILDS

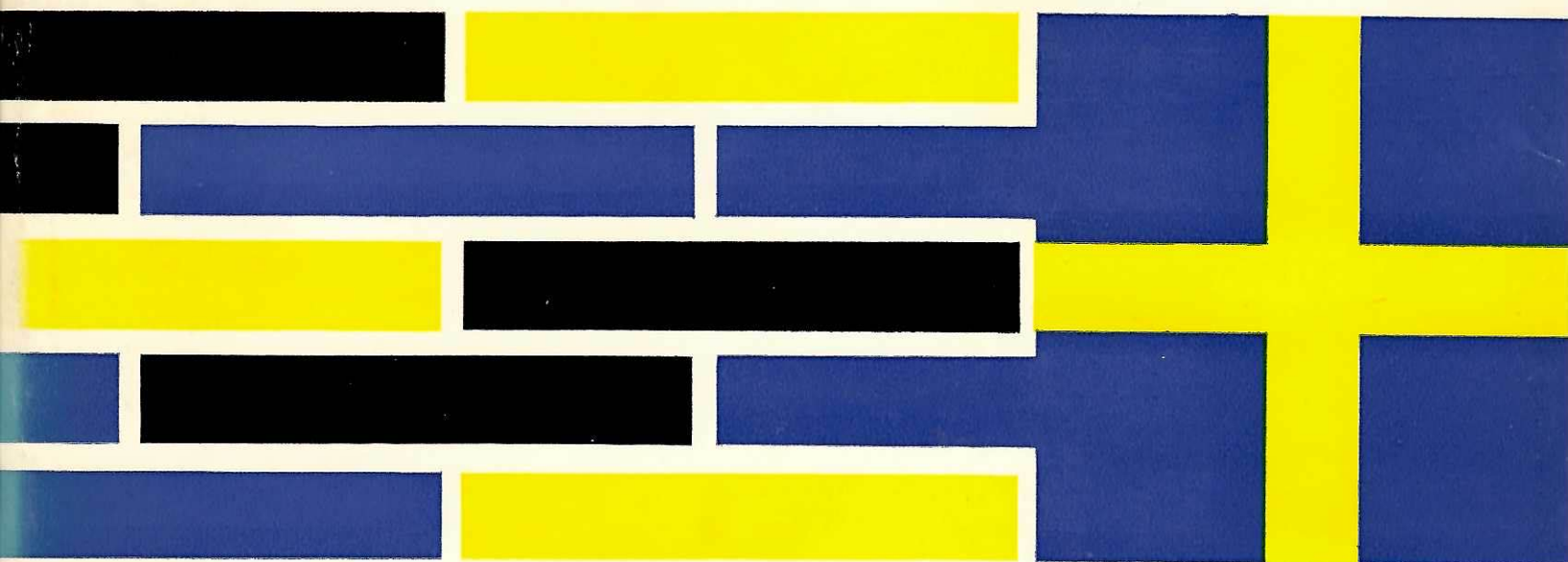
G. E. KIDDER SMITH

EXTENSIVELY REVISED

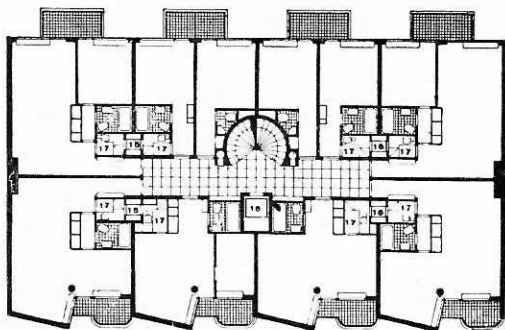
WITH 130 RECENT ILLUSTRATIONS



REINHOLD



Linna



The Collective House, Stockholm

Sven Markelius, architect

“The Collective House” is aptly named, for it inaugurated the thinking, subsequently carried on by others, that there must be more provision in our present way of life for working parents. This has been realized here in a series of fifty-seven 1 to 4 room flats where food can be had in the ground floor restaurant (also open to the public), sent up all prepared by dumb-waiter, or cooked yourself; where children can be left for a few hours or the day with a registered nurse; where maid, nurse or porter service can be obtained by merely telephoning down stairs. Such planning is inevitable.

Architecturally, Kollektivhus is one of the most distinguished housing units in Sweden. The staggered elevation evolved from the desire to give each apartment a private balcony with a view of the lake a hundred yards away.

