

home

eight

Philip

A dream home! Ever since he was a teenager, Philip has wanted to live in this Functionalist dream house. When he was studying to be an architect it even came up in the course literature, which convinced him even more that this was where he should live. But it's no wonder it's so fascinating; we're talking about Sven Markelius's experimental 'Collective House' from 1935. It contains all the modernness and functionality a person could ever want in a home, and a bit more. Welcome to this elegant little home, in this exciting apartment block. A building where the architect's radical ideas aimed to create freedom and equality for people!





SALZERS
BAR

The building has been through several phases. Firstly there was the heyday, when it was full of activity and community, with a staff of 20 working behind the scenes to make the idea of a simple everyday life work. Then the years passed, and building maintenance was neglected. In the late 1980s an extensive renovation began, and today virtually everything has been restored to the original floor layout. Today the whole building is culturally listed.



The building is as exciting architecturally as it is socially. The idea was to free up time for the residents. There was a day care centre in the basement, a laundrette, a restaurant, and you could even get medical care in the building. The modern person shouldn't have to cook, so every home was equipped with a food lift that delivered a piping hot dinner from the restaurant at street level. The day care centre is still there, and you can still get food sent up in the charming little lift.



Look carefully at the hob. It has been put at the back against the wall so the space at the front can be used for preparation. Philip stands along the short end to cook. The kitchen has a thick worktop clad in bent stainless steel.





Markelius was influenced by his times – an age that put a lot of stock in Swiss architect Le Corbusier’s ideas about the home as a machine.



You don't have to be a minimalist to live like this. Philip has objects that only serve as decorative elements.





The house is angled so elegantly that all the apartments have views of the water, including from all the balconies. The white Functionalist pillar can be found in all the apartments.



When the apartment was renovated by the previous owner, it was redone almost entirely in line with Markelius's original ideas on floor layout and choice of materials. So when Philip moved in, it was pretty much restored to its original design. In the middle of the 43 m² apartment is a large storage cube. It contains everything from clothes and suits to the TV, kitchen, oven, fridge and tinned foods.

The bathroom is small, but Philip has allowed the shower a lot of space while minimising the washbasin.

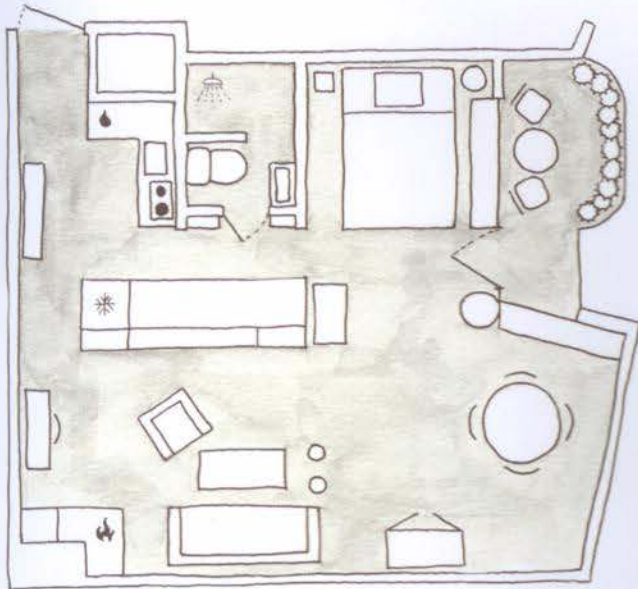


Is the home a machine? Yes and no. A home should ideally be somewhere to keep everything in its place, while also being a cosy, enjoyable place to live.





Collective house with an elegant storage cube.



Is it possible to live a modern life in a house built for what life was like in the 1930s? Yes, after all our need for sleep, storage, relaxation and food are the same now as they were then. This building is of course very special, since all the solutions were made with function and aesthetics very much in mind. But wherever you live, there's a lot of inspiration to be found here.

1

When Philip moved in, everything was pretty much done. In the middle of the 43 smartly utilised square metres stands a black-painted cube that provides all the storage a home could need. This solution gives a perception of space in the rest of the home.

2

Everything has been considered down to the finest detail. In the bathroom he has a small washbasin, with the tap on the short side to take up as little space as possible. Because the basin takes up a minimum of space, the shower could be allocated a lot of space.

3

Rather than curtains Philip has chosen sleek black blackout blinds in all the windows.

4

When you live in a limited space, which in fact most of us do, you have to be bold and think completely opposite to create good solutions. Rather than having the hob at the front on the widest part, it is furthest in against the wall and Philip stands on the short side to cook. Radical and ingenious!

